

**AUTOMATIC FRONT LOADING WASHER DRYER MACHINE**

**USER MANUAL**

HWD60-1403D



**Haier**

03 - 09

10 - 15

16 - 20

**TABLE OF CONTENTS****BEFORE USE**

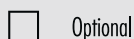
>COMPONENTS.....	03
>PREPARATION.....	04
>SAFETY INSTRUCTIONS.....	05
>INSTALLATION.....	06
>CONTROL PANEL.....	08

**USING THE APPLIANCE**

>PROGRAM SELECTION.....	10
>CONSUMPTION AND TECHNICAL DATA.....	11
>WASHING METHODS.....	12

**MAINTENANCE**

>CLEANING & CARE.....	16
>DISPLAY CODES.....	18
>TROUBLESHOOTING.....	19
>IMPORTANT SAFETY INFORMATION.....	20

**LEGEND**

For your safety, any instructions in this manual with this "Warning" sign must be followed strictly.

**IMPORTANT DISPOSAL INSTRUCTIONS**

As a responsible manufacturer we care about the environment. As such we urge you to follow the correct disposal procedure for your product and packaging materials.

This will help conserve natural resources and ensure that it is recycled in a manner that protects health and the environment.

You must dispose of this product and its packaging according to local laws and regulations. Because this product contains electronic components, the product and its accessories must be disposed of separately from household waste when the product reaches its end of life.

Contact your local authority to learn about disposal and recycling. The product and packaging should be taken to your local collection point for recycling. We apologise for any inconvenience caused by minor inconsistencies in these instructions, which may occur as a result of product improvement and development.

**COMPONENTS****THANKS FOR PURCHASING A HAIER PRODUCT**

Please read these instructions carefully before using this appliance. The instructions contain important information which will help you get the best out of the appliance and ensure safe and proper installation, use and maintenance.

Keep this manual in a convenient place so you can always refer to it for the safe and proper use of the appliance.

If you sell the appliance, give it away, or leave it behind when you move house, make sure you also pass on this manual so that the new owner can become familiar with the appliance and safety warnings.

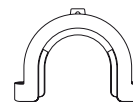
**ACCESSORIES**

Check the accessories and literature in accordance with this list:

1x Inlet hose assembly



1x Drain hose bracket



1x User manual



4x Blanking plugs



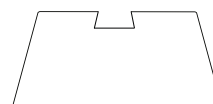
1x Warranty card



1x Bottom cover

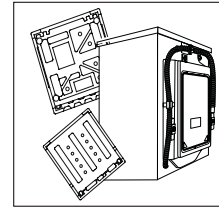


1x Felt



**PREPARATION****PREPARING THE MACHINE**

Remove all the packing materials prior to use, including the polystyrene base. Upon opening the package, water drops may be seen on the plastic bag and the porthole. This is normal phenomenon resulting from water tests in the factory.

**DESCRIPTION**

This diagram may differ slightly from the layout of the washing machine you have just purchased due to technical improvements.

Control panel

Door handle

Work top

Washer door

Start/Pause

Detergent distribution drawer

Filter cover

Drain hose

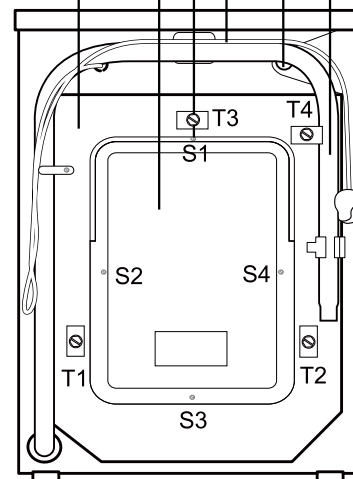
Water inlet valve

Power cord

Back cover screws

Back cover

Transportation bolts





## SAFETY INSTRUCTIONS

### BEFORE SWITCHING THE APPLIANCE ON FOR THE FIRST TIME

#### DO ...

- ... Make sure that the transport bolts are removed.
- ... keep surrounding areas free from accumulation of lint, dust and dirt.
- ... Make sure that the plug is accessible.
- ... Hold the plug and not the electric cable when unplugging the power supply.
- ... ensure you connect the appliance directly to a domestic mains water supply
- ... Keep away from heat sources and direct sun light to prevent plastic and rubber components from aging.
- ... Make sure that the power cord is not caught under or in the appliance and avoid damage to the power cable.
- ... Check that hose joints and connections are firm and no water can leak. If joints are loose or there is leakage, turn off the water supply and refit. Do not use the washing machine until the hoses are properly fitted.

### DURING DAILY USE OF THE APPLIANCE

#### DO ...

- ... Pull up zips and fix loose threads to prevent the items from being entangled. If necessary, put small items into a laundry bag to avoid damage.
- ... Turn off the machine after each wash program and switch it off at the mains to save electricity and for safety. Wipe clean the lower part of the porthole.
- ... Keep the door slightly open when the washing machine is not in use to prevent formation of odours.
- ... The power cord must be replaced by the manufacturer, service agent or qualified persons, if it is damaged.
- ... Ensure that the appliance is not used by persons with reduced physical, sensory or mental capabilities, lack of experience and knowledge without supervision or instruction by a person responsible for their safety.
- ... Supervise children to ensure that they do not play with the appliance.
- ... make sure not to place heavy objects or sources of heat or damp on top of the appliance

#### DO NOT ...

- ... Touch or use the appliance when barefoot or with wet or damp hands or feet.
- ... Use flammable detergent or dry cleaning agent.
- ... Use any flammable sprays in close vicinity to the appliance.
- ... Remove or insert the plug in the presence of flammable gas.
- ... Allow children or infirm persons to play with the appliance or packing materials.
- ... Install the appliance outdoors in a damp place, or in an area which may be prone to water leaks such as under or near a sink unit. In the event of a water leak allow the machine to dry naturally.
- ... Place the washer dryer directly on a carpet, or close to a wall or furniture.
- ... Use an appliance with missing parts.
- ... Dry unwashed garments in the washer dryer

#### DO NOT ...

- ... Touch the washer dryer door during the washing or drying process - it gets hot!
- ... Hot wash or dry foam rubber or sponge-like materials, shower caps or waterproof textiles.
- ... open the detergent distribution drawer during the wash cycle.
- ... Force the washer dryer door open. The door is fitted with a self-lock device and will open shortly after the washing procedure is ended.
- ... Open the washer dryer door if the water level is visibly over the porthole.
- ... Cover the washer dryer with a cover that may keep dampness in.
- ... Stop the washer dryer before the end of the drying cycle unless all items are quickly removed and spread out so that the heat is dissipated.

**INSTALLATION****INSTALLING THE BOTTOM COVER**

This is an optional item. Fitting the bottom cover reduces the noise, but can be omitted and does not effect the energy or washing performance of the washer dryer.

**WARNING: THIS TASK REQUIRES THE WASHER DRYER TO BE TURNED ON ITS SIDE. THE WASHER DRYER IS VERY HEAVY. RISK OF INJURY.**

**CAUTION !** This must be done before removing the transportation bolts.

1. Lay protective packing material on the floor and turn the washer dryer on its side.
2. Unscrew the 4 feet.
3. Attach the felt pad to the bottom cover using the double sided tape.
4. Attach the bottom cover by inserting the each foot through the bottom cover into the base of the washer dryer.
5. Screw each foot in but do not tighten fully as once the washer dryer is installed in its final position the feet will require adjustment to ensure the washer dryer is level.
6. Lift the washer dryer back onto its feet.

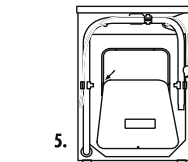
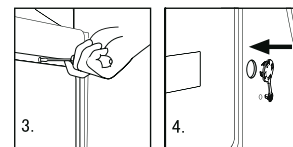
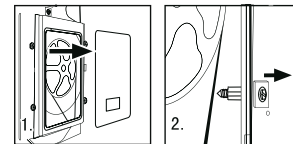
**REMOVING THE TRANSPORTATION BOLTS**

The transportation bolts are designed for clamping anti-vibration components inside of the washing machine during the transportation process.

1. Remove the back cover.
2. Remove the four bolts on the rear side and take out the plastic stabilisers from within the machine.
3. Replace the back cover.
4. Fill the holes left by the bolts with blanking plugs.

**Note:**

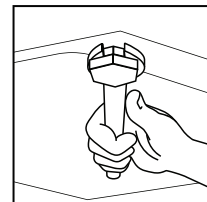
- 1. When replacing the back cover, ensure convex surface is facing outwards, then refit the back cover as shown in Fig. 5.**
- 2. Keep the transportation bolts and plastic spacers in a safe place for later use.**

**ADJUSTING THE WASHER DRYER MACHINE**

There are adjustable feet under the bottom of the washer dryer machine. Before use, they should be adjusted so that the machine is level. This will minimise vibrations and thus noise during use. It will also reduce wear and tear. We recommend using a spirit level to level the appliance. The floor should be as stable and flat as possible.

**CAUTION.**

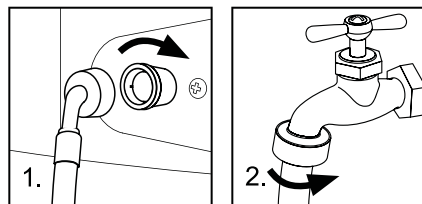
Do not install where temperatures can fall below freezing as this can cause severe damage to your machine.



**INLET HOSE**

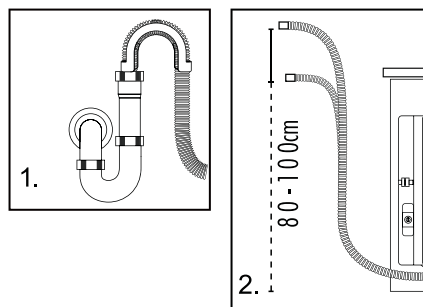
1. Connect the nut on the inlet hose to the connector on the water valve.
2. Connect inlet hose to a water tap with cold, fresh water.

**Note: Use the hose-set supplied with the appliance. Old hose-sets should not be reused.**

**DRAIN HOSE**

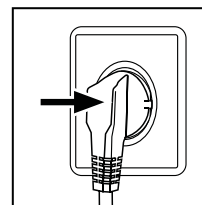
1. Use the drain hose bracket to keep the end of the drain hose retained and prevent the outflow of water. Don't extend the length of the drain hose; if an extended hose is required, please consult a service agent.
2. The height of the drainage outlet must be 80-100 cm. Fix the drain hose to the clip at the back of the washer dryer machine to prevent it from dropping off.

**Note: The drain hose should not be submerged in water and should be securely fixed and leak-free. If the drain hose is placed on the ground or if the pipe is at a height of less than 80cm, the washing dryer will continuously drain while being filled (self-siphoning).**

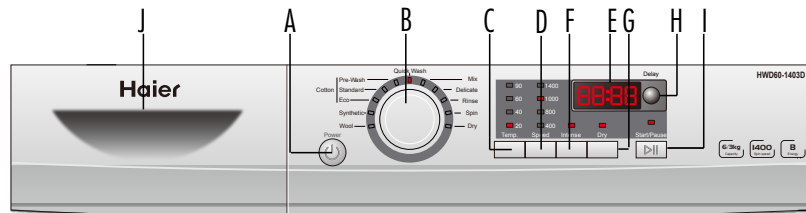
**CONNECTING TO THE POWER SUPPLY**

Before connecting to the power supply, check:

- The socket is adequate for the maximum power of the washing dryer (For safety, fuses in the power circuit should be rated for no less than 15A).
- The supplied voltage should match the requirements of this appliance.
- The power outlet should be capable of accepting the Washer Dryer plug.
- Connect the machine to an earthed socket outlet.



## CONTROL PANEL



- |   |                           |   |                               |
|---|---------------------------|---|-------------------------------|
| A | Power button              | F | Intense button                |
| B | Program knob              | G | Dry button                    |
| C | Wash temperature button   | H | Delay button                  |
| D | Spin speed setting button | I | Start/Pause button            |
| E | Display                   | J | Detergent distribution drawer |

**OPERATIONAL FUNCTIONS**

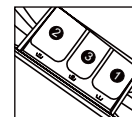
- |   |                 |                                                                                                                                                                                                                                                                                                                                                                                                                                                                                                         |
|---|-----------------|---------------------------------------------------------------------------------------------------------------------------------------------------------------------------------------------------------------------------------------------------------------------------------------------------------------------------------------------------------------------------------------------------------------------------------------------------------------------------------------------------------|
| A | -Power button   | _ Press this button to switch on the washing machine. Press it again to switch it off. Press this button gently for 2 seconds to switch off the machine as buttons are soft touch sensitive.                                                                                                                                                                                                                                                                                                            |
| B | -Program knob   | _ By turning the knob clockwise/counterclockwise, the required program can be selected. There are 12 programs available. After a program is selected, the corresponding light will go on.                                                                                                                                                                                                                                                                                                               |
| C | -Wash Temp      | _ Touch this button lightly, the washing temperature will be displayed on the display screen. Select a temperature according to the type of laundry.                                                                                                                                                                                                                                                                                                                                                    |
| D | -Spin Speed     | _ Touch this button lightly to select the desired speed. When a speed is set, it will be displayed on the display screen.<br><b>Note: Different water temperatures and spinning speeds can be set for different laundries. Wash using the default settings if there is no special requirement.</b>                                                                                                                                                                                                      |
| E | -Display        | _ Information as remaining wash time and error messages will be shown here.<br><b>Note: After a wash program is started the display will go on and the remaining wash time decreases. As the water pressure and temperature may differ, the remaining time may be adjusted accordingly. When the laundry is not balanced during spinning, the time may be automatically prolonged.</b>                                                                                                                  |
| F | -Intense button | _ If the machine is loaded to the maxim capacity, press this button before starting the machine, this will slightly increase the wash time.                                                                                                                                                                                                                                                                                                                                                             |
| G | -Dry button     | _ Press the button to select, the "Dry" indicator light will illuminate. At this time the washing program can not be selected. The washer dryer perform drying function only. Press the Dry button<br>Standard Dry: Thoroughly dries laundry: 2' 30". Iron Dry: Laundry is slightly damp for ease of ironing: 1' 00". Freshen Laundry: Airs laundry and removes accumulated humidity: 0' 30". Drying times may vary due to the type of fabric, garment and other factors not within the unit's control. |

**-Control panel lock function:**

Press the "Delay" and the "Start/Pause" buttons simultaneously for 3 seconds after starting a program. Button Functions and wash cycle will be unable to be changed. To unlock press the "Delay" and "Start/Pause" buttons again for 3 seconds.



- H **-Delay button** \_ Touch this button lightly, the washing machine will start operation after a period of time and the corresponding indicator will go on. The range is 0.5-24 hours; each touch of this button increases half an hour. After the button is set, press the Start/Pause button to start countdown of the set time (the time is displayed on the screen until the program ends).  
**Note: The delay time must be longer than the program time otherwise the washing machine will start the wash program directly.**
- I **-Start/Pause button** \_ When the washing machine is connected to the power socket and a program is selected, lightly touch this button to start operation. During a wash cycle, touch it lightly ,operation will stop and the digits on the screen start blinking. Touch it again to resume operation. To cancel a wash program during a wash cycle, touch this button, when the digits on the screen start blinking, press the Power switch, the program will be cancelled.
- J **-Detergent distribution drawer** \_ Open the drawer, three compartments can be seen:  
Compartment 1: Prewash detergent  
Compartment 2: Detergent for programs 1 to 11.  
Compartment 3: Softener, conditioning agent.  
**The recommendation on the type of detergents is suitable for the various washing temperatures, please refer to the detergent manufactures instructions**

**-To cancel a program**

Press the "Start/Pause" button, then switch off the power and the program is automatically cancelled. Turn on the power and use the program selector again to choose another program.

**-To cancel audible alarm**

Alarm sound can be cancelled if it is required (not recommended)

Switch on the washing machine and turn the program knob to Spin cycle, then press the "Delay" and "Dry " button, hold on for 3 seconds.

The message "BEEP OFF" will be displayed on the screen, indicating that the alarm sound has been cancelled.

**-To reinstate audible alarm**

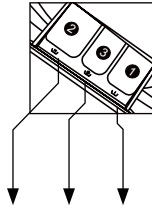
Switch on the washing machine and turn the program knob to Spin cycle, then press the "Delay" and "Dry " button, hold on for 3 seconds.The "BEEP ON" message will be displayed on the screen, indicating that the alarm sound has been reinstated.

**-Power-off memory function**

In case of abrupt power failure or the need to cut off the power during a program cycle, the present settings will be saved and the preset operation will resume when the power is on again.

## PROGRAM SELECTION

## PROGRAM MODES



- 1 Detergent compartment for prewash mode
- 2 Detergent compartment
- 3 Compartment for softener and other additives

Program	Maximum	Preset	2	3	1	LaundryType	Preset spin Speed
1 → Quick wash	-- to 40 °C	-- °C	<input checked="" type="checkbox"/>	<input type="checkbox"/>	<input checked="" type="checkbox"/>	Light Solid Cotton	800rpm
2 → Cotton Pr-Wash	-- to 90 °C	40 °C	<input checked="" type="checkbox"/>	<input type="checkbox"/>	<input checked="" type="checkbox"/>	Heavily soiled Laundry	1000rpm
3 → Cotton	-- to 90 °C	40 °C	<input checked="" type="checkbox"/>	<input type="checkbox"/>	<input checked="" type="checkbox"/>	Cotton and Linen	1000rpm
4 → Cotton Eco	-- to 90 °C	20 °C	<input checked="" type="checkbox"/>	<input type="checkbox"/>	<input checked="" type="checkbox"/>	Cotton and Linen	1000rpm
5 → Synthetic	-- to 60 °C	20 °C	<input checked="" type="checkbox"/>	<input type="checkbox"/>	<input checked="" type="checkbox"/>	Fast colour synthetic	800rpm
6 → Wool	-- to 40 °C	20 °C	<input checked="" type="checkbox"/>	<input type="checkbox"/>	<input checked="" type="checkbox"/>	Wollens	400rpm
7 → Mix	-- to 60 °C	20 °C	<input checked="" type="checkbox"/>	<input type="checkbox"/>	<input checked="" type="checkbox"/>	Cotton fabrics	800rpm
8 → Delicate	-- to 40 °C	20 °C	<input checked="" type="checkbox"/>	<input type="checkbox"/>	<input checked="" type="checkbox"/>	Sports wear	400rpm
9 → Rinse	--	-- °C	<input checked="" type="checkbox"/>	<input type="checkbox"/>	<input checked="" type="checkbox"/>	Cotton or synthetic	800rpm
10 → Spin	--	--	<input checked="" type="checkbox"/>	<input checked="" type="checkbox"/>	<input checked="" type="checkbox"/>	Cotton or synthetic	1000rpm
11. → Dry	--	--	<input checked="" type="checkbox"/>	<input checked="" type="checkbox"/>	<input checked="" type="checkbox"/>	/	No spin

 Yes

 No

 Optional

## CONSUMPTION AND TECHNICAL DATA

### CONSUMPTION TABLE

PROGRAM	MAX. LOAD	TEMPERATURE	WASHING TIME	SPIN PERFORMANCE	ENERGY CONSUMPTION	WATER CONSUMPTION
→ Quick wash	2kg	--°C	0:15	/	/	/
→ Cotton Pr-Wash	6kg	40°C	1:22	/	/	/
*) → Cotton	6kg	40°C	1:20	50%	4.86kwh	120L
→ Cotton Eco	6kg	20°C	1:06	/	/	/
→ Synthetic	4kg	20°C	1:08	/	/	/
→ Wool	2kg	20°C	1:05	/	/	/
→ Mix	4kg	20°C	1:14	/	/	/
→ Delicate	2kg	20°C	0:44	/	/	/
→ Rinse	6kg	--°C	0:23	/	/	/
→ Spin	6kg	--	0:12	/	/	/
→ Dry	3kg	--	2:30			

The standard 60 °C and 40 °C cotton programmes are suitable to clean normally soiled cotton laundry and they are the most efficient programmes in terms of combined energy and water consumptions for washing that type of cotton laundry; The actual water temperature may differ from the declared cycle temperature;

\*) Energy Label Program Settings: 1.Washing "Cotton+60°C+Intense+Max speed" 2.Dring: "Dry"

### TECHNICAL DATA

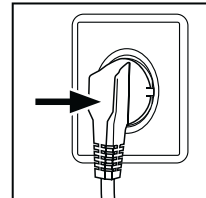
Power source	220 - 240V~/50Hz
Max. working current (A)	10
Water pressure (MPa)	0.03≤P ≤1
Nominal load (kg)	6
Spinning speed (r/min)	1400
Washing programs	10
Drying programs	1
Max power (W)	2050
Dimensions (HxDxW mm)	850 x 520 x 590
Net weight (kg)	67
Power consumption of the off-mode(W)	< 0.5
Power consumption of the Left-on(W)	< 0.5
Dry heating(W)	1800
Dry load(kg)	3

**WASHING METHODS**

This Washer Dryer is for domestic use only. Do not use it for purposes other than that for which it was designed. Follow the instructions given on the label of each garment and wash only machine-washable garments. Do not dry garment that has been cleaned with industrial chemicals

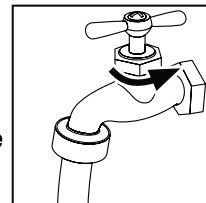
**POWER SUPPLY**

Connect the washing machine to the power supply (220V to 240V~/50Hz).

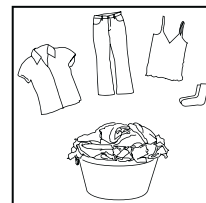
**WATER CONNECTION**

Connect the hose to the cold water connection. Turn on the tap. The water must be clean and clear.

**Note: Before use, check for any leaks in the joints between the tap and the inlet hose by turning on the tap.**

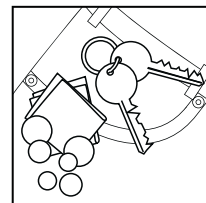
**PREPARING THE LAUNDRY**

- Sort out clothes according to fabric (cotton, synthetics, wool or silk) and to how dirty they are.
- Separate white clothes from coloured ones. Wash them first by hand to check if they fade or run.
- Empty pockets (keys, coins, etc.) and remove the harder decorative objects (e.g. brooches).



**Attention: Small parts (like buttons, etc), or sharp (zips & buckles) items may cause damage to the machine.**

- Garments without hems, underwear, finely woven textile such as fine curtains are to be put into wash bag (it is better not to wash them in a washing machine).
- Close zippers and hooks, make sure the buttons are sewn on tightly and place small items such as socks, belts, bras, etc. in the wash bag.
- Unfold large pieces of fabric such as bed sheets, bedspreads, etc.
- Turn shirts inside out.



## LOADING THE MACHINE

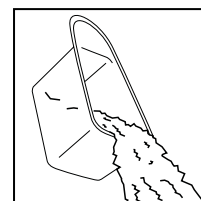
- When first using the washer dryer, let it run unloaded for one program to prevent the laundry from being tainted by oil or dirty water from the washing machine. Before washing you should run the machine without laundry, but with detergent, with 60°C program.
- Open the washer door, put in laundry piece by piece. Close the door tightly.
- Do not overload the washer dryer.



**Note:** If you want to wash and dry the laundry in one operation, do not exceed 3kg load. If the load is more than 3kg then at the end of the wash program you will have to remove some of the damp laundry so the load in the drum is 3kg (dry load). If you exceed 3kg load for drying then laundry may not full dry in the required time and could cause the overheat safety switch to trip.

## SELECTING DETERGENT

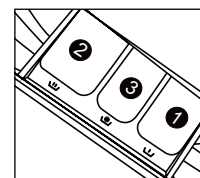
The washing efficiency and the performance is determined by the quality of detergent used. Special non-foaming detergent produces good washing results. Use specific detergents for synthetic and woollen goods. Do not use dry cleaning agents such as trichloroethylene and similar products.



**Note:** Detergent should be mixed with warm water. Do not add more detergent than needed. Please follow the usage recommendation on the detergent package.

## ADDING DETERGENT

Slide out the detergent drawer and put the required detergent and softening agent into the corresponding compartments. Push back the drawer gently. (Refer to the instructions on the drawer)



### **Caution:**

- For pre-wash program, detergent should be added to both compartments 1 and 2. For other programs, do not add detergent to compartment 1.
- Use liquid detergent according to the instructions on its package. Do not use liquid detergent if the Prewash mode or "Delay" is selected.
- Do not overuse softener as it may damage artificial fibres.

## SELECTING PROGRAM

To get the best washing results, an appropriate washing program should be selected according to the laundry type. Please turn the program knob to select the right program.

## SELECTING ADDITIONAL FUNCTIONS

Select the required options. (Refer to the "Control panel" pages 08 and 09). Otherwise keep all the buttons deselected. If you wish to dry your laundry directly after the wash cycle is finished, please press the "Dry".

### **SETTING WASHING TEMPERATURE**

Press and hold down the temperature button until the desired temperature is selected

### **SETTING SPIN SPEED**

Press and hold down the "Spin Speed" (D) button until the desired speed is selected.

The symbol "0" for no spin. See "Operational functions" on the "Control Panel" pages (08 and 09) for selecting temperature and spin speed. Set to the value recommended by garment care instructions/preprogrammed settings.

### **WASHING**

Press the Start/Pause button. The washer dryer will operate according to the preset programs. The washer dryer will stop operation automatically when a washing cycle ends. The "End" sign will appear on the display. Open the washer door and take out the laundry.

### **AFTER WASHING OR DRYING**

Turn off the water supply and unplug the power cord. Open the washer door to prevent formation of moisture and odours. Let the door open while not used.



### **TIPS FOR SAVING ENERGY**

1. Collect clothes for one full wash load.
2. Avoid overloading the washing machine.
3. Prewash only heavily soiled clothes.
4. Reduce the amount of detergent or choose Express 15' or Daily wash programs for slightly soiled clothes.
5. Choose the correct washing temperature. Most modern detergents can wash with good results in temperatures lower than 60°C. Only use higher temperatures for heavily soiled laundry.
6. Follow the usage recommendation on the detergent package to avoid using too much detergent.

## CARE GUIDE

Machine Wash, COLD	Hand Wash	Tumble Dry, NO HEAT	Do Not Tumble Dry	Iron, Steam or Dry, with LOW HEAT
Machine Wash, WARM	Do Not Wash	Tumble Dry, LOW HEAT	Line Dry	Iron, Steam or Dry, with MEDIUM HEAT
Machine Wash, HOT	Bleach as needed Any bleach, like Clorox®, may be safely used	Tumble Dry, MEDIUM	Drip Dry	Iron, Steam or Dry, with HIGH HEAT
Machine Wash, COLD Permanent Press	Non-chlorine Bleach as needed Use only a color-safe bleach, like Clorox 2®	Tumble Dry, HIGH	Dry Flat	Do Not Iron with Steam
Machine Wash, WARM Permanent Press		Tumble Dry, Permanent Press, NO HEAT	Don't dry clean	Do Not Iron
Machine Wash, HOT Permanent Press		Tumble Dry, Permanent Press, LOW HEAT	Dry on clothes hanger	Dryclean May appear with additional letters and/or lines Take this item to a professional drycleaner
Machine Wash, COLD Gentle Cycle	Do Not Bleach No bleach product should be used including detergents with bleach - or follow bleach package test procedures to test for bleach safety.	Tumble Dry, Permanent Press, MEDIUM	Tumble dry, Medium heat	Do Not Dryclean
Machine Wash, WARM Gentle Cycle		Tumble Dry, Gentle Cycle, NO HEAT	Tumble dry, low heat	Dry cleaning with any solvent
Machine Wash, HOT Gentle Cycle	Wool Mark	Tumble Dry, Gentle Cycle, LOW HEAT	Don't tumble dry	Dry cleaning with peroxide
		Tumble Dry, Gentle Cycle, MEDIUM		

## LOAD WEIGHT REFERENCE

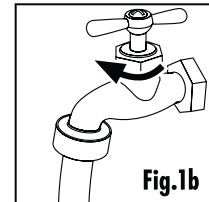
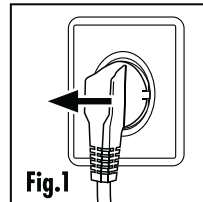
Bed sheet (single)	Cotton	Approximately 800g
Blanket	Wool	Approximately 3000g
Blended fabric clothes	/	Approximately 800g
Jackets	Cotton	Approximately 800g
Jeans	/	Approximately 800g
Overalls	Cotton	Approximately 950g
Ladies Pyjamas	/	Approximately 200g
Shirts	/	Approximately 300g
Socks	Blended fabrics	Approximately 50g
T-Shirts	Cotton	Approximately 300g
Underwear	Blended fabrics	Approximately 70g

## PLEASE NOTE

The final part of a drying cycle is a cooling cycle without heat to ensure that the dried items are left at a temperature that keeps them undamaged.

**CLEANING & CARE****AFTER WASHING OR DRYING**

Turn off the water supply and pull out electricity plug (Fig.1) after each wash. Open the washer door to prevent formation of moisture and odours. If the washing machine is left idle for a long period, turn off water supply (Fig.1b) drain the water in the machine and replace the drain hose.

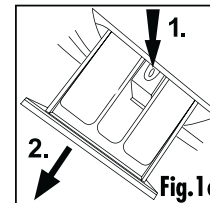
**CLEANING THE DETERGENT DRAWER**

Clean the detergent/softener drawer regularly. Pull out the drawer, flush it clean with water and then replace it.

**REMOVING DETERGENT DRAWER**

Slide out draw (in direction shown in Fig.1c) until draw release is visible.

Flush it clean with warm water, dry and then replace it.

**CLEANING THE MACHINE**

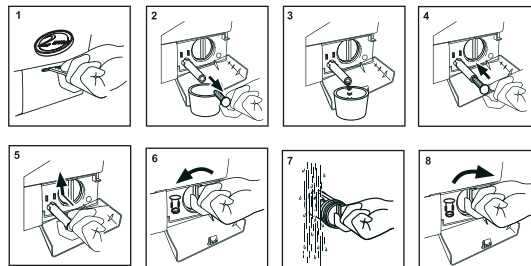
Unplug the machine during cleaning and maintenance. Use a soft cloth dampened with soap liquid to clean the machine case and rubber components. Do not use organic chemicals or corrosive solvents.

**CLEANING THE FILTER**

**Caution: Place a container under the drain pump filter, to collect any excess water that may come out of the drain pump when the filter is removed.**

Clean the filter once a month:

1. Push a flat blade screwdriver into the slot on the filter cover and pull it open, do not use excessive force (Fig 1).
2. Remove the rubber hose from its clip and stand a suitable container under it, remove the bung to drain the water (Fig 2-3).
3. Replace the bung and fit it back into its clip (Fig4-5).
4. Unscrew the filter and rinse it under running water, replace it and close the flap (Fig 6-7-8).

**Caution:**

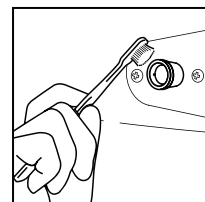
**1.The filter must be in place during operation, ensure it is in place after cleaning to avoid leakage.**

**2.Place a container under the drain pump filter, to collect any excess water that may come out of the drain pump when the filter is removed.**



## **WATER INLET VALVE AND INLET VALVE FILTER**

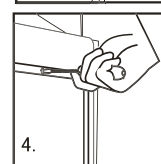
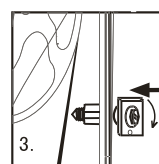
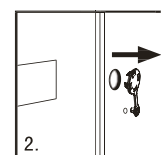
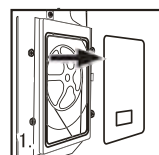
To prevent blockage to the water supply by ingress of foreign substances, clean the water inlet valve and inlet valve filter regularly.



## **MOVING THE MACHINE**

If the machine is to be moved to a distant location, replace the transportation bolts removed before installation to prevent damage as shown below.

1. Remove the back cover.
2. Remove the blanking plugs.
3. Insert the plastic spacers and the transportation bolts; Tighten the bolts with a spanner.
4. Refit the back cover.



## **LONG PERIODS WITHOUT OPERATION**

If the washer dryer is left idle for a long period, pull out the electrical plug and turn off the water supply. Open the washer door to prevent formation of moisture and odours. Leave the door ajar while not in use.



**DISPLAY CODES****DISPLAY CODES AND SPECIAL FUNCTIONS**

CODES	CAUSES	SOLUTIONS
Err1	→ Door is not properly shut.	_ Shut the door properly.
Err2	→ Drainage error, water not emptied within 6 minutes.	_ Clean the filter and check the drain hose for blockage. If error still exists, please contact the maintenance personnel.
Err3	→ Temperature sensor not properly connected or damaged.	_ Contact the maintenance personnel.
Err4	→ Heater error (Appears at the end of a cycle).	_ Reduce load and then start washing again. If problem still exists, please contact the maintenance personnel.
Err5	→Water level not met in 8 minutes. →The height of the drain hose is below 80 cm. → The drain hose is in water.	_ Make sure that tap is turned on, and water pressure is normal. If problem still exists, please contact the maintenance personnel. _ Install drain hose within 80-100 cm of height. _ Make sure the drain hose is not in water.
Err7	→ Motor error.	_ Power off to resolve it.If problem still exists, please contact the maintenance personnel.
Err8	→ Water exceeds protective level.	_ Power off to resolve it.If problem still exists, please contact the maintenance personnel.
Err9	→ The dry temperature sensor error.	_ Power off to resolve it.If problem still exists, please contact the maintenance personnel.
Err10	→ Error of the water level sensor.	_ Power off to resolve it.If problem still exists, please contact the maintenance personnel.
Err11	→ Error of the dry water level sensor.	_ Power off to resolve it.If problem still exists, please contact the maintenance personnel.
Err13	→ Dry heating element error.	_ Power off to resolve it.If problem still exists, please contact the maintenance personnel.
Err14	→ Dry motor error.	_ Please contact the Service Center
End	→ End of wash cycle.	
1:25	→The remaining time is 1 hour 25 minutes.	
19:25	→Status information:Preset time for delayed operation.	
UNb	→Washing machine has an unbalanced load protection function.When unbalanced weight is greater than allowable maximum, the washing machine will not spin and will run at a low speed to avoid abnormal vibration and noise.	1.In case washing 1 piece of laundry (carpet, bed sheet, table sheet, etc) make it symmetrical inside the drum. 2.Lower the wet weight of laundry pieces by wringing manually and placing them back in the drum in symmetrical position. 3.Take out and then reposition the laundry pieces inside the washing machine in a more balanced position on the inner wall of the drum. 4.Add 1 or 2 pieces of laundry into the drum to reduce the unbalanced load effects. 5.Restart the spin cycle by choosing Spin programme.In case the failure persists, please ask a qualified technician to repair it.

EUAR      Electronic fault.

\_ Please contact the Service Center

## TROUBLESHOOTING

### TROUBLESHOOTING

The following circumstances do not mean there is a fault with the appliance. Contact the Customer Care Team when you have confirmed the problem after following the instructions below.

PROBLEM	CAUSES	SOLUTIONS
Washing machine fails to operate.	<ul style="list-style-type: none"> <li>→ Poor connection to the power supply.</li> <li>→ Power failure.</li> <li>→ The washer door is not properly closed.</li> <li>→ Machine has not been switched on.</li> </ul>	<ul style="list-style-type: none"> <li>_ Check connection to the power supply.</li> <li>_ Check the power supply.</li> <li>_ Close the washer door properly.</li> <li>_ Make sure the machine is switched on.</li> </ul>
Washing machine cannot be filled with water.	<ul style="list-style-type: none"> <li>→ The "Start/Pause" button is not pressed.</li> <li>→ Water tap is not turned on.</li> <li>→ Water pressure is less than 0,03 MPa.</li> <li>→ The inlet hose is kinked.</li> <li>→ Water supply failure.</li> <li>→ The program knob is not properly set.</li> <li>→ The washer door is not properly closed.</li> <li>→ The inlet hose filter is blocked.</li> </ul>	<ul style="list-style-type: none"> <li>_ press the "Start/Pause" button.</li> <li>_ Turn on the water tap.</li> <li>_ Check water pressure.</li> <li>_ Check the inlet hose.</li> <li>_ Ensure the water supply.</li> <li>_ Set the program knob properly.</li> <li>_ Close the washer door properly.</li> <li>_ Unblock the inlet hose filter.</li> </ul>
Machine is draining while being filled.	<ul style="list-style-type: none"> <li>→ The height of the drain hose is below 80 cm.</li> <li>→ The drain hose is in water.</li> </ul>	<ul style="list-style-type: none"> <li>_ Install drain hose within 80-100 cm of height.</li> <li>_ Make sure the drain hose is not in water.</li> </ul>
Drainage failure.	<ul style="list-style-type: none"> <li>→ Drain hose is blocked.</li> <li>→ Drain hose end is higher than 100 cm above the floor level.</li> <li>→ The filter is blocked.</li> </ul>	<ul style="list-style-type: none"> <li>_ Unblock the drain hose.</li> <li>_ Make sure the drain hose end is lower than 100 cm above floor level.</li> <li>_ Unblock the filter.</li> </ul>
Strong vibration while spinning.	<ul style="list-style-type: none"> <li>→ Not all transportation bolts have been removed.</li> <li>→ Washing machine is located on an uneven surface or is not level.</li> <li>→ Machine load is over 6 kg.</li> </ul>	<ul style="list-style-type: none"> <li>_ Remove all transportation bolts.</li> <li>_ Make sure the washing machine is on an even surface and levelled.</li> <li>_ Reduce amount of laundry in the drum.</li> </ul>
Operation stops before completing wash cycle.	<ul style="list-style-type: none"> <li>→ Water or electricity failure.</li> </ul>	<ul style="list-style-type: none"> <li>_ Check the power supply or water supply.</li> </ul>
Operation stops for a period of time.	<ul style="list-style-type: none"> <li>→ Washer dryer gives an error message.</li> <li>→ Washing machine is in soaking cycle?</li> </ul>	<ul style="list-style-type: none"> <li>_ Check display codes.</li> <li>_ Press the rinse hold button or the Start/pause button again to cancel it.</li> </ul>
Excessive foam in the drum, which is spilled to the distribution drawer.	<ul style="list-style-type: none"> <li>→ The detergent is not a low-foaming type or for manual wash.</li> <li>→ Excessive use of detergent.</li> </ul>	<ul style="list-style-type: none"> <li>_ Check if your detergent is appropriate.</li> <li>_ Reduce amount of detergent in the distribution drawer.</li> </ul>
Automatic adjustment of the washing time.	<ul style="list-style-type: none"> <li>→ The washing program duration will be adjusted</li> </ul>	<ul style="list-style-type: none"> <li>_ This is normal and doesn't affect the functionality.</li> </ul>
Spinning fails	<ul style="list-style-type: none"> <li>→ Unbalance of the laundry</li> </ul>	<ul style="list-style-type: none"> <li>_ Add clothes or run a spinning program again.</li> </ul>

Do not use a multiple socket extension cord. A separate earthed socket is required which shall be accessible at all times.

If the mains cord becomes damaged, it must be replaced by the manufacturer, its service agent or similarly qualified person with a lead of the same type and rating to avoid a hazard.

Never remove the plug from the socket by pulling on the cord, always grasp the plug.

The door may get hot during use, do not touch it and keep children away whilst the machine is operating.

Never open the detergent drawer while the machine is running. Hot water and detergent might be ejected.

When installing the product, make sure the mains cord is not trapped or twisted.

#### WARNINGS:

THIS APPLIANCE IS INTENDED FOR DOMESTIC USE ONLY, COMMERCIAL OR ANY OTHER USE MAY INVALIDATE THE WARRANTY AND MIGHT BE DANGEROUS.

Never touch or operate the machine with wet hands or when bare footed.

Do not put the machine on a carpet that can block the ventilation slots on the bottom of the unit.

Do not install this machine outdoors or in a damp place or expose it to rain.

Do not install this product near a heat source or in direct sunlight.

Do not place any object on the machine when it is operating.

This appliance must be earthed.

If you are disposing of an old appliance, disable the door lock to avoid entrapment of children when playing and cut off the mains cord close to the machine.

The appliance must be connected to a 220-240 volts 50 cycle AC supply by means of a three pin socket, suitably earthed and should be protected by a 13 amp fuse in the plug.

The appliance is supplied with a standard 13 amp 3-pin plug fitted with a 13-amp fuse. Should the fuse require replacement, it must be replaced with a fuse rated at 13 amps and approved to BS1362.

If the mains plug is unsuitable for the socket outlet in your home or is removed for any other reason, then the cut off plug should be disposed of safely, do not insert the cut off plug into a mains outlet to prevent the hazard of electric shock. Remove the fuse before disposal.

There is a danger of electric shock if the cut off plug is inserted into any 13-amp socket outlet.

How to wire a 13 amp plug. (UK Only)

The wires in the mains lead on this appliance are coloured in accordance with the following code:

Green and Yellow - Earth      Blue - Neutral      Brown - Live

As the colours may not correspond with the markings identifying the terminals in your plug proceed as follows.

The green and yellow wire must be connected to the terminal in the plug which is marked with the

letter E or with the earth symbol  $\equiv$  or coloured green and yellow.

The blue wire must be connected to the terminal marked N.

The brown wire must be connected to the terminal marked L.

You must make sure the lead is firmly secured under the cord clamp.

If the mains plug is unsuitable for the socket outlet in your home or is removed for any other reason, then the cut off plug should be disposed of safely, do not insert the cut off plug into a mains outlet to prevent the hazard of electric shock. Remove the fuse before disposal.

There is a danger of electric shock if the cut off plug is inserted into any 13-amp socket outlet.

Turn off the water and disconnect from the mains supply before maintenance and cleaning.

Keep all packaging out of reach of children.

The manufacturer accepts NO responsibility for injury or damage caused by incorrect installation.

#### WATER CONNECTION

The product should be connected to the water main using new hose sets, old hose sets should not be re used.

The water pressure must not be less than 0.03MPa.

Connect to the water main using a standard 3/4 inch threaded tap outlet.

